



VICTOR - G. & COMPANY

SUPER - G.

HATCHERIES NEEDLES

(VACCINATION)

Number 1 source for all types of Reusable & Custom Needles



- Hypodermic Needles
- Veterinary Needles
- Aspiration Needles
- Dispensing Needles
- Blunt Needles
- Irrigation Needles
- Custom Needles
- Brass Hubs
- Cannulae



VGC Victor - G. & Company



Our products have been providing reliable cost effective service to our users. Victor - G. has an increasingly important position in the market for complete range of needles used majorly in Veterinary and Laboratory & Research field and is an established producer of this product.

From the very beginning we have focused intensively on quality, technical development and customer relationship. The result of the groups efforts in the area of R&D have lead to a growing no. of innovations that has created new standards and new products among the manufacturers of veterinary needles.

We take utmost care in our products. All the needles are manufactured using high quality S.S. surgical grade 304 that meets ISO 9629 size specifications and meets applicable elemental content of ASTM F-899-84 standards. Our needles are machined and electro polished on precision machines.

Whether the application may be mundane or extremely sophisticated, the company has the technical personnel coupled with an experience of more than 40 years to meet any type of requirement of the customer. We also house our own R & D department to carry out trials of any new products.

Extensive experience in hypodermic tubing technology has enabled us to expand our services to supply products to Research Laboratories, Hospitals and Medical Schools, Government Departments, Pharmaceutical and Instrument Manufacturers. Applications include a wide variety of clinical and laboratory procedures, as well as industrial uses

47, INDUSTRIAL ESTATE, KANPUR 208 012, INDIA

TEL + 91 512 2221481, 2672009 FAX + 91 512 2217250

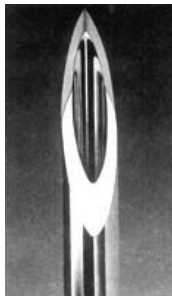
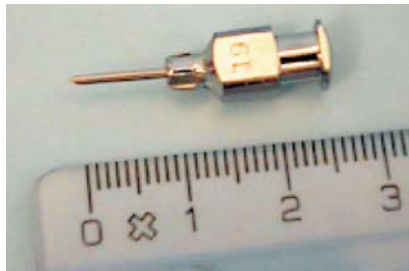
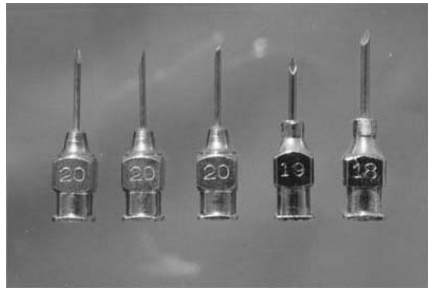
Email info@victor-g.com, victorg@sancharnet.in

Website www.victor-g.com, www.veterinaryneedles.com



VICTOR - G. & COMPANY

Super - G. Stainless Steel HATCHERIES Needles



COMPONENTS :

HUBS

Made from free cutting brass as per IS:319-1974, is properly electroplated to make it corrosion resistant and suitable for Luer Lock or Luer Tip glass syringe for LEAK PROOF JOINT (as per IS:3234-1965). Hubs with RECORD FITTING ARE ALSO AVAILABLE

Hatcheries Needles feature over- sized Chrome Plated Hubs, for secure gripping even under the most difficult circumstances. Needles with standard (regular) hubs are also available in all sizes configuration, as they are useful when working with smaller animals .

CANNULA

Made from hyperchrome stainless steel tubing, our cannulae have super sharp LANCENT POINT, offering longer life, reduced coring and painless penetration. Points are machine ground to assure uniform sharpness and minimal patient discomfort due to tearing of skin. Precision grinding, micro bead jet blasting and ultrasonic cleaning assure freedom from burrs and debris.

SS tubing is fabricated without exposing the interior to lubricants or mechanical drawing, offering, therefore, the cleanest, purest tube interiors available anywhere.

PACKING

12 needles are packed in Plastic Box. 12 Boxes in export worthy duplex box.

STILLET / CLEANING WIRES are supplied on request

Poultry & Hatcheries (birds) needles are available in 18G (1.3mm) to 23G (0.6mm) x 1/4"(6mm) - 1/2" (13mm) with standard luer lock hub, and standard bevel cannula.

These stainless steel needles are designed to maintain their sharpness through a large number of injections. There are a wide range of sizes available depending upon your specific requirements. They can be relied upon to provide the most consistent sharpness and length of needle.

Vaccination is usually done with a reusable stainless steel needle attached to a multiple injector. The number of small animals that can be injected with each needle is 500 - 1000. This number depends upon the skill of the vaccination team and the size of the animal. Care should be taken to avoid dulling the needle by injecting through scales. Any accumulated scales and debris should be carefully removed from the needle to maximize needle life and avoid reducing the penetration depth. The length of needle chosen will vary depending upon the species being vaccinated. Needle diameter should be as small as possible while allowing the vaccine to pass through easily.

The needles manufacture process totally eliminates interior coarseness of the needle tubing making it an excellent choice for critical blood flow applications and delicate procedures where turbulence and cell damage must be minimized.

47, INDUSTRIAL ESTATE, KANPUR 208 012, INDIA

TEL + 91 512 2221481, 2672009 FAX + 91 512 2217250

Email info@victor-g.com, victorg@sancharnet.in

Website www.victor-g.com, www.veterinaryneedles.com



VICTOR - G. & COMPANY

Super - G. Stainless Steel HATCHERIES Needles

PRODUCT RANGE

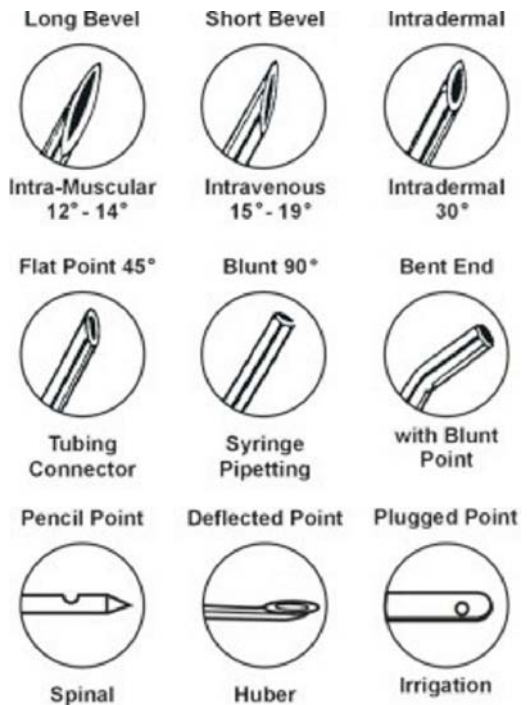
6G	1/4"	3/8"	1/2"	5/8"	3/4"	1"	1 1/4"	1 1/2"
8G	1/4"	3/8"	1/2"	5/8"	3/4"	1"	1 1/4"	1 1/2"
10G	1/4"	3/8"	1/2"	5/8"	3/4"	1"	1 1/4"	1 1/2"
11G	1/4"	3/8"	1/2"	5/8"	3/4"	1"	1 1/4"	1 1/2"
12G	1/4"	3/8"	1/2"	5/8"	3/4"	1"	1 1/4"	1 1/2"
13G	1/4"	3/8"	1/2"	5/8"	3/4"	1"	1 1/4"	1 1/2"
14G	1/4"	3/8"	1/2"	5/8"	3/4"	1"	1 1/4"	1 1/2"
15G	1/4"	3/8"	1/2"	5/8"	3/4"	1"	1 1/4"	1 1/2"
16G	1/4"	3/8"	1/2"	5/8"	3/4"	1"	1 1/4"	1 1/2"
17G	1/4"	3/8"	1/2"	5/8"	3/4"	1"	1 1/4"	1 1/2"
18G	1/4"	3/8"	1/2"	5/8"	3/4"	1"	1 1/4"	1 1/2"
19G	1/4"	3/8"	1/2"	5/8"	3/4"	1"	1 1/4"	1 1/2"
20G	1/4"	3/8"	1/2"	5/8"	3/4"	1"	1 1/4"	1 1/2"
21G	1/4"	3/8"	1/2"	5/8"	3/4"	1"	1 1/4"	1 1/2"
22G	1/4"	3/8"	1/2"	5/8"	3/4"	1"	1 1/4"	1 1/2"
23G	1/4"	3/8"	1/2"	5/8"	3/4"	1"	1 1/4"	1 1/2"
24G	1/4"	3/8"	1/2"	5/8"	3/4"	1"	1 1/4"	1 1/2"
25G	1/4"	3/8"	1/2"	5/8"	3/4"	1"	1 1/4"	1 1/2"
26G	1/4"	3/8"	1/2"	5/8"	3/4"	1"	1 1/4"	1 1/2"

Veterinary Needles
Luer Lock
Standard Sizes

6G	From 2" upto 12"
8G	From 2" upto 12"
10G	From 2" upto 12"
11G	From 2" upto 12"
12G	From 2" upto 12"
13G	From 2" upto 12"
14G	From 2" upto 12"
15G	From 2" upto 12"
16G	From 2" upto 12"
17G	From 2" upto 12"
18G	From 2" upto 12"
19G	From 2" upto 12"
20G	From 2" upto 12"
21G	From 2" upto 12"
22G	From 2" upto 12"
23G	From 2" upto 12"
24G	From 2" upto 12"
25G	From 2" upto 12"
26G	From 2" upto 12"

Veterinary Needles
Luer Lock
Long Length

POINT STYLES



SPECIALITY NEEDLES

HYPODERMIC
VETERINARY
SPINAL
CUSTOM FABRICATED
LARGE HUBS
LUER LOCK ADAPTERS
BLUNT END
PENCIL POINT
HYPODERMIC NEEDLE TUBING

Needles of special lengths and sizes can be manufactured on demand.

Call / Fax / Email your special requirements. ALL NEEDLES FURNISHED NON STERILE

47, INDUSTRIAL ESTATE, KANPUR 208 012, INDIA

TEL + 91 512 2221481, 2672009 FAX + 91 512 2217250

Email info@victor-g.com, victorg@sancharnet.in

Website www.victor-g.com, www.veterinaryneedles.com